



ISTITUTO INTERNAZIONALE STUDI AVANZATI DI  
SCIENZE DELLA RAPPRESENTAZIONE DELLO SPAZIO  
Geometria proiettiva, Geometria descrittiva, Rilevamento, Fotogrammetria

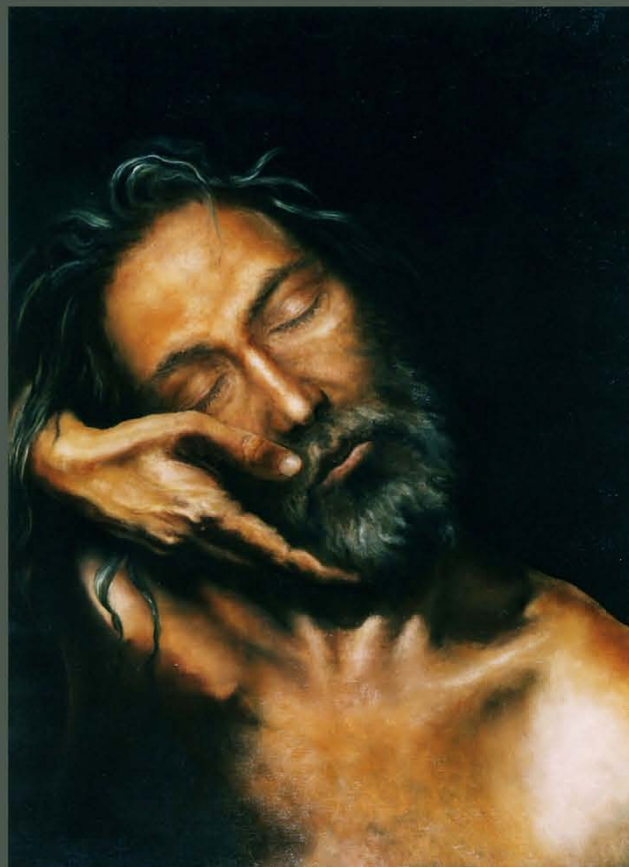
INTERNATIONAL INSTITUTE FOR ADVANCED STUDIES OF  
SPACE REPRESENTATION SCIENCES  
Projective geometry, Descriptive geometry, Survey, Photogrammetry

*Palermo, Italia*

Giuseppe Maria Catalano

# SINDONE

## IL RITORNO ALLA VITA



1999

## **SHROUD, BACK TO LIFE**

*On the bases of Space Representation Science the research surveys the position of the body, of the cloth, of the image and the mutual projective link when the image was generated on the Shroud, an orthogonal projection to the sepulchral plane. The body was lying prone, but the face didn't lean against the stone plane.*

*The research goes on surveying a garment, the calecon, a snakeskin belt, a buckle, a female bracelet, all of them dating back to Christ's time.*

*A long linen band round the waist, before and behind the body, is also surveyed. This band is the same you can see sewed on Shroud. It seems it was used for the deposition from the cross.*

*Around the head, you can spot a branch of *Sarcopoterium spinosum* with leaves, flowers, fruits and thorns.*

*A parallel study proves that the Sudarium of Oviedo was folded in eighty layers and fixed with a safety-pin, a "fibula", dating back to Christ's time. The same Sudarium, folded this way, and the same "fibula" are also surveyed from the Shroud, placed under the head. This pad hastily made with Sudarium supported Christ's turned upside down head.*

*The research surveyed also the thumbs and the four holes produced by nails dating back to Christ's time.*

*The images of the objects stop on body contour.*

*Lastly the study deals with the darkest mystery of the Shroud, those apparently deformed and indistinct areas placed on a clear and exact image. First the image of a sixth finger is surveyed on the right hand, then the same hand clenched into a fist. There is a ring around the thumb and the fist is pulling an object.*

*The anatomic shape of the right hand in this position reveals a strong effort during traction of the ring around the thumb. It proves a conscious movement made by a quite fit man. The anatomic shape of the right hand in the other position, the one well known for centuries, proves the remarkable distance of the body from the Shroud plane.*

*Like photo grams laid one upon the other, the linen shows not only these two extremes but also the intermediate positions of the hand. Finally the left hand, the left foot and the calecon belt are also surveyed each one in distinct positions, following and close, caused by regular bodily movements. For a few seconds a geometrically definite radiation, shed by the body, passing through objects, printed on the Shroud the images of a quite fit body in a conscious movement.*